

Ms. Kavitha's and Ms. Sarah's Classroom Newsletter February 2012



Dear Parents,

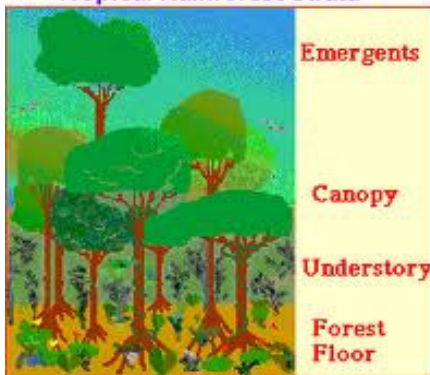
We had a great month and the kids loved learning about the continent Antarctica and penguins. I am very happy to see my class growing and thank you for all your continued support.

I would like to thank all the parents who signed up for the food prep. I would like to thank Amanda's parents for getting the Beta fish for the classroom. The children have named her Fanny. We will be learning about the parts of the fish this month. Also, a special thanks to Rossie (Audrey's mom) for the treasures last month.

During the month of February we will be learning about South America and The Amazon Rain Forest.

Rain Forest: The four strata's of the Rain forest are the Emergent Layer, Canopy, Under Story and Forest floor.

Tropical Rainforest Strata



Some of the animals and birds of the rainforest are

1. Toucan- Bird with a big bill
2. Piranha- a meat eating fish
3. Tarantula- a large hairy spider
4. Howler Monkey- The loudest land animal

Here are some interesting facts about Scarlet Macaw:

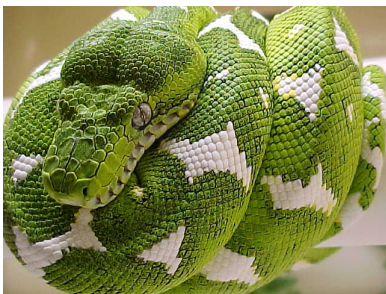


The Scarlet Macaw (*Ara macao*) is a large, colorful parrot. Some consider the Scarlet to be among the most beautiful birds in the world. Scarlet Macaws originate in the humid lowland subtropical rain forests, open woodlands, river edges, and savannas of Central and South America.

The Scarlet Macaw can live up to 80 years, although, a more typical lifespan is 30 to 50 years

Scarlet Macaws eat mostly fruits and seeds, including large, hard seeds. They like apples, nuts, bananas, and fruits. They also feed on nectar and buds.

Here are some interesting facts about The Emerald tree Boa



The emerald tree boa, is a green snake with white bands. It lives in trees and shrubs near water (like swamps and marshes in rain forests). It is found in the lower Amazon basin (in Brazil) and in Guyana and Suriname. This snake has a life span of 15-20 years.

The emerald tree boa is a carnivore (a meat-eater). It hunts at night (it is nocturnal). The emerald tree boa eats birds and rodents. After eating a large animal, the snake needs no food for a long time, and rests for weeks.

Here are some interesting facts about Anaconda



The anaconda is the biggest snake in the world. Also known as the Water Boa, this giant, meat-eater lives in swampy areas of tropical (warm) South America. It spends a lot of time in shallow water, hidden from unsuspecting prey. Anacondas are related to boa constrictors. They give birth to live young; 20 to 40 baby snakes are born at one time.



The Blue Morpho Butterfly is a species of neotropical butterfly that has brilliant blue wings (the females are not as brilliantly colored as the males and have a brown edge with white spots surrounding the iridescent blue area). The undersides (visible when the butterfly is resting) are brown with bronze-colored eyesspots. The Blue Morpho has a wingspan of about 6 inches (15 cm). Adults drink the juices of rotting fruit using their straw-like proboscis



© wondercliparts.com

Our class Valentine's Day Party is on Feb 14th. Tuesday from 11.20 am -12 pm. This is a class only party. Parents are welcome to send in special treats for this party. Special treat includes chocolate covered strawberries, heart shaped cookies, juice boxes, Pizza, etc. All the children are requested to bring 18 Valentine cards for their friends in class. Be sure to only write who the card is from and not who it is for.

Please talk to your child about following the rules of the classroom and working independently.

Thank you for your continued support.

Regards,

Kavitha Christopher.